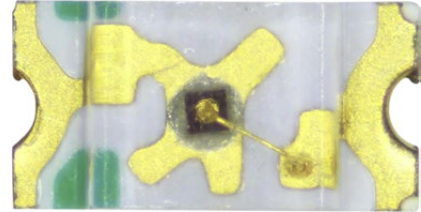


SMD LED

Yellow 1.8...2.6 V 0603

SPECIFICATION:

| | |
|-------------------------------|--------------|
| Package | 0603 |
| Light colour | Yellow |
| Transmission angle | 130 ° |
| Case colour | Transparent |
| Housing type | SMD |
| Conducting-state voltage max. | 2.6 V |
| Conducting-state voltage min. | 1.8 V |
| Dominant wavelength | 592 nm |
| Forward current | 30 mA |
| Forward voltage | 1.8...2.6 V |
| Luminous intensity | 120 mcd |
| Luminous intensity max. | 120 mcd |
| Luminous intensity min. | 120 mcd |
| Off-state current | 10 µA |
| Off-state voltage | 5 V |
| Operating temperature | -40...+85 °C |
| Peak wave length | 593 nm |
| Power | 78 mW |
| Technology | AlGaInP |



Art. Nr.

RND 135-00046

